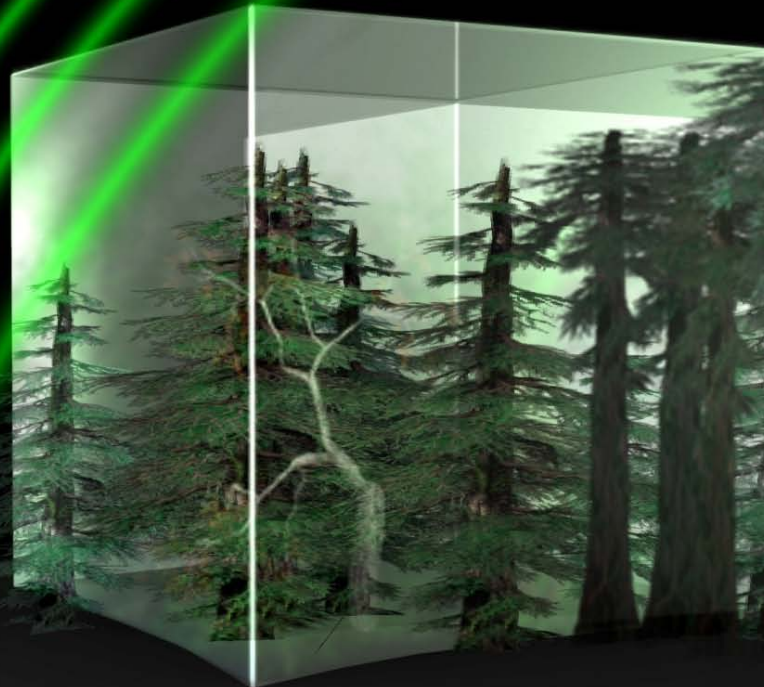


Information sur BIOMASS

Thuy Le Toan

Centre d'Etudes Spatiales de la Biosphère
CNES-CNRS-UPS-IRD
Toulouse, France

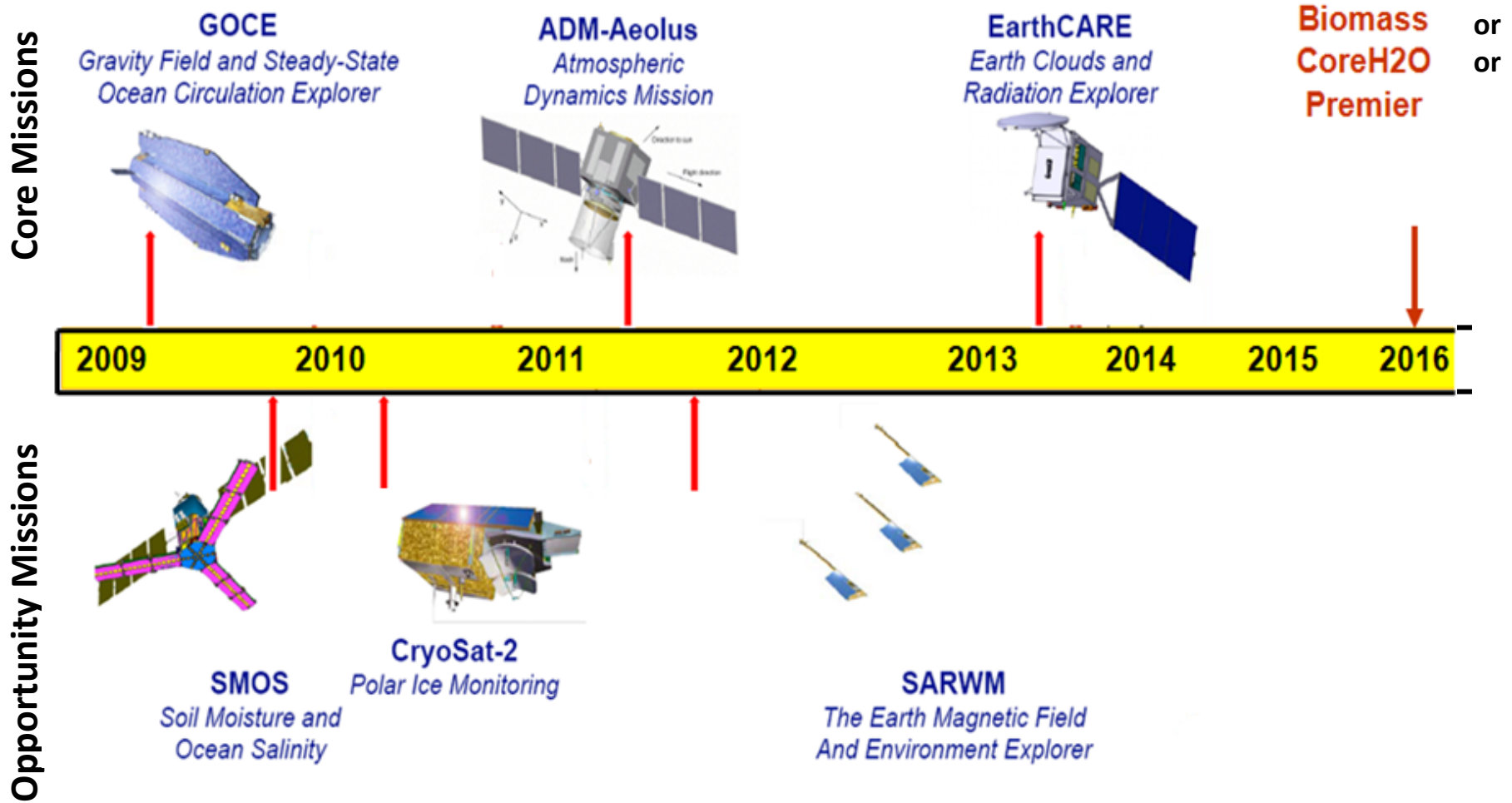
Context: the BIOMASS mission



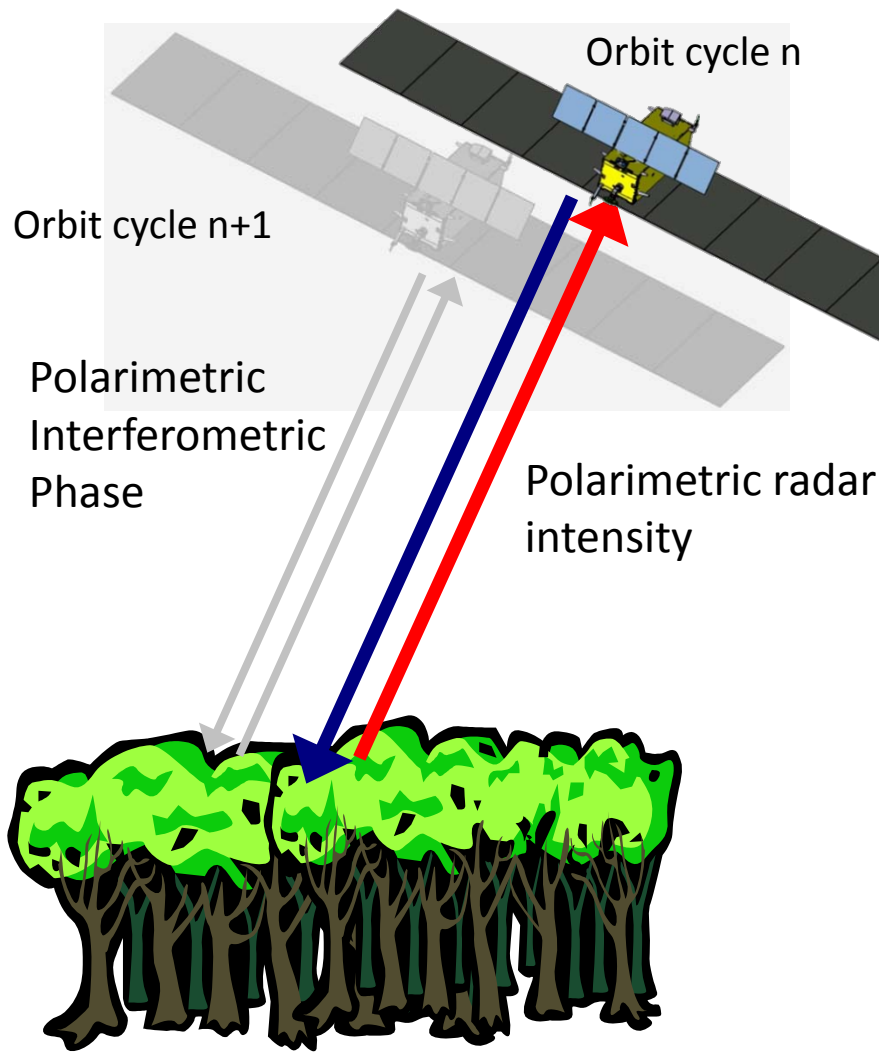
Mission Advisory Group:

J. Chave, J.Dahl, T. Le Toan, K. Papathanassiou, S. Quegan,
F.Rocca, S. Saatchi, H. Shugart, L. Ulander , M. Williams

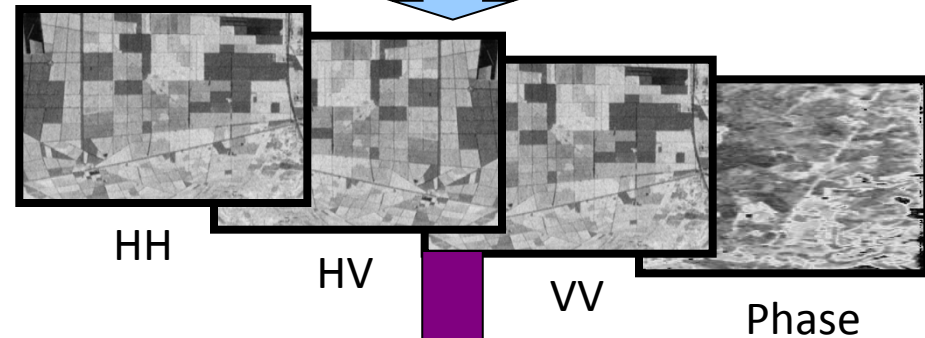
Context: ESA Earth Explorer missions



BIOMASS observation concept



Calibration, Ionospheric correction

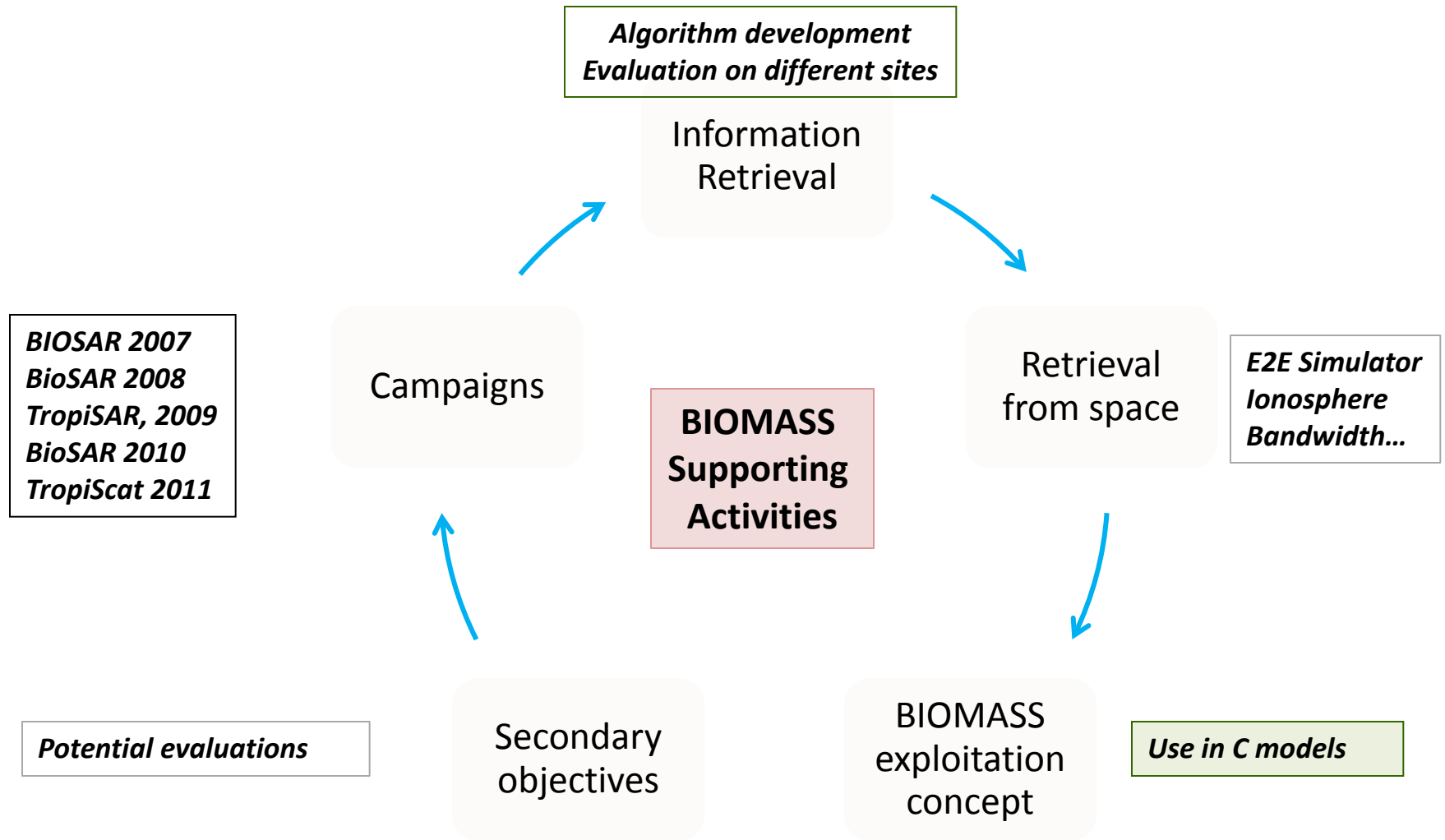


Retrieval algorithm

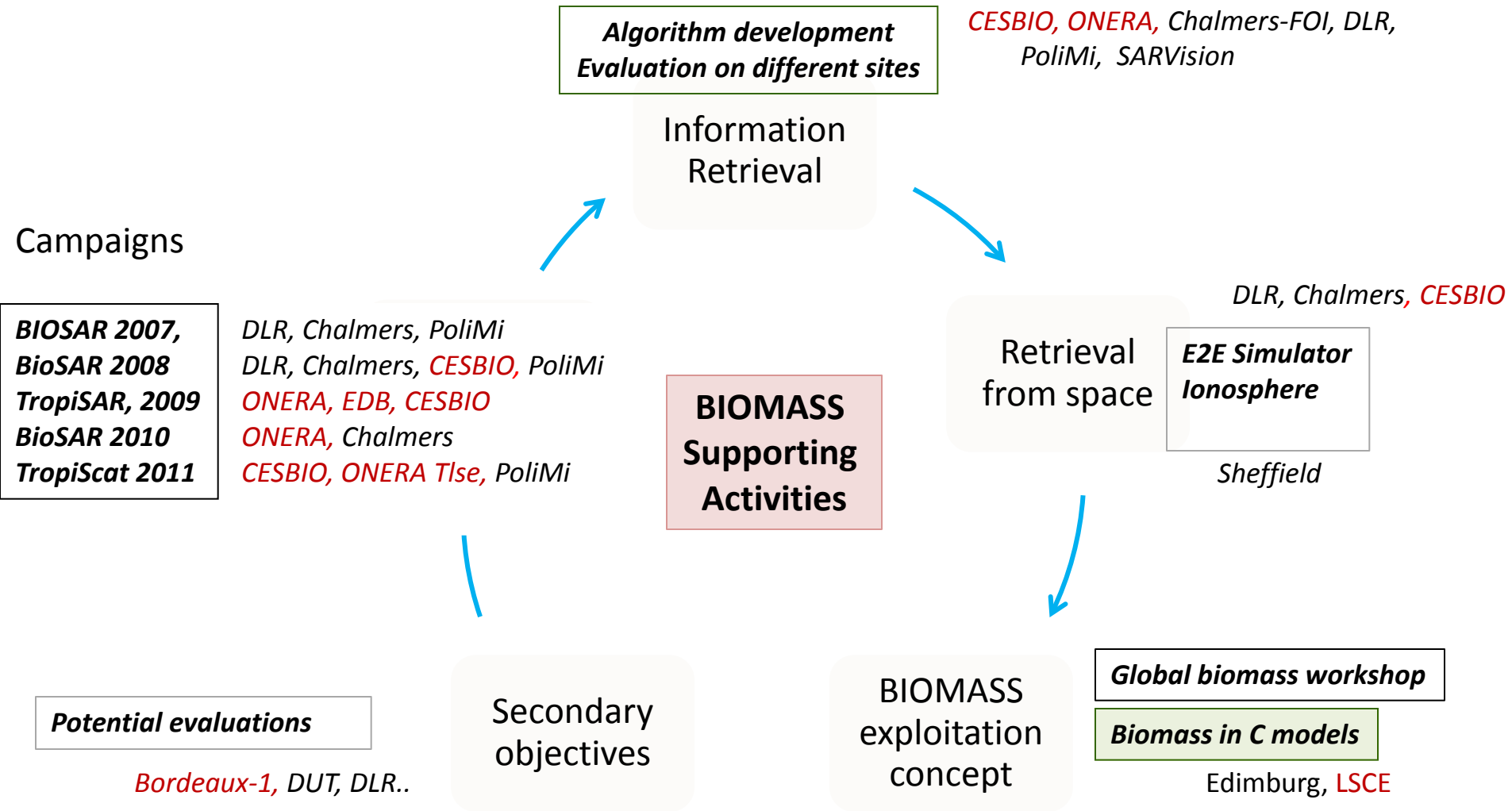
Geophysical products

- Forest biomass
- Forest height
- Forest biomass temporal change
- Forest disturbance

BIOMASS phase A activities



BIOMASS phase A activities at ESA



Questions to be addressed

1. Measuring biomass of dense tropical forests ($B > 300$ t/ha) ?
2. General & regional algorithms?
3. Effects of topography
4. Ionospheric effects ?
5. Biomass in carbon calculations
6. Secondary objectives

La procédure de sélection

